

*Appalachian Reel/March*

# **Sandy Boys**

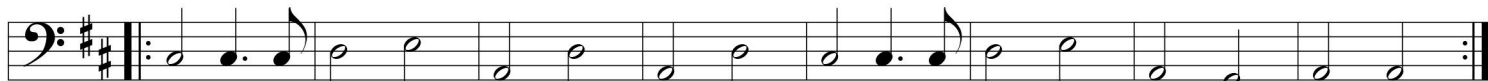
*arr. Peter Macfarlane*

♩ = 96

*~ suggested cello accompaniment 3*



A A A A A A A G A



A D A A D A D A D A A G A

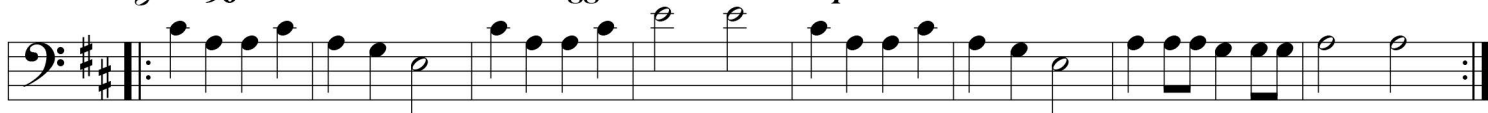
*Appalachian Reel/March*

# **Sandy Boys**

*arr. Peter Macfarlane*

♩ = 96

*~ suggested cello accompaniment 4*



A A A A A A A G A



A D A A D A D A D A A G A

*Appalachian Reel/March*

# **Sandy Boys**

*arr. Peter Macfarlane*

♩ = 96

*~ suggested cello accompaniment 5*



A A A A A A A G A



A D A A D A D A D A A G A